

Mitchell Institute News

The Newsletter of the Senator George J. Mitchell Scholarship Research Institute

Fall 2010

2010 Fall Gala Celebrates Scholars and Successes

Nearly 500 statewide business, community and government leaders gathered on the evening of Friday, October 22nd, at the Portland Marriott at Sable Oaks to celebrate the Mitchell Institute at our annual Fall Gala. The event recognized important donors and honored Mitchell Scholars.

Addressing the attendees were four Mitchell Scholars and Alumni: **Otis Edgecomb**, a Mitchell Scholar from Ft. Fairfield who now attends Bowdoin College; **Kelsie Hanscom**, a Mitchell Scholar from Bethel who now attends Husson University; **Nate Kinney**, a

Mitchell Scholar from Phillips who now attends University of Maine; and **Dakotah Weitko Atchinson**, a graduate of Fryeburg Academy and the University of Southern Maine. They spoke of their own path to higher education and the impact the Mitchell Institute has had on their lives. Said Kinney, "The Mitchell Institute is a wonderful family – a family that supports young men and women across the state, aids in career-related opportunities, builds networks and provides personal and professional development. I only recently realized how much this Institute has provided for me, and how much it is a part of me." **Continued on Page 6**



2010 Fall Gala
Senator Mitchell addresses the crowd at this year's Fall Gala at the Marriott Hotel in South Portland. For more pictures and information about the Gala, turn to Pages 6-8

MITCHELL
INSTITUTE
SENATOR GEORGE J. MITCHELL
SCHOLARSHIP RESEARCH INSTITUTE

Career & Personal Support Programs to Get an Overhaul

In addition to scholarships, the Mitchell Institute provides many services to Mitchell Scholars through the Career and Personal Support (CAPS) Program. This program includes informal mentoring, community service opportunities, regular staff interaction, professional and leadership development, and summer fellowships — all of which enhance the college experience. Participation in these programs is voluntary and open exclusively to Mitchell Scholars. We believe that involvement in the CAPS Program may better the chance that Mitchell Scholars will persist through to graduation.



Mitchell Scholar Logan Ouelette with co-workers from his summer internship at Bath Iron Works, which he acquired with assistance from the Mitchell Institute.

This summer, the Mitchell Institute awarded sixteen Career Opportunity Summer Awards (COSA) to Mitchell Scholars for a variety of career-related summer jobs. The program, also known

as COSA, offers stipends to Mitchell Scholars so that they can pursue career-focused and community service-related summer work. Without funding, these students are often forced to decline promising employment because they cannot afford to live away from home or to take an unpaid internship. COSA enables Mitchell Scholars to take advantage of unique opportunities to accept employment in valuable career-related jobs without facing financial hardship, while also committing to a community service project. This program is entirely student-driven, meaning that Scholars must find their career- or community service-focused jobs, create a budget that demonstrates the need for a COSA award, and apply for funding.

This year, the COSA program is sponsored by **Continued on Page 4**

Mitchell Scholar News



I guess I'll first mention the group Engineers Without Borders that I've been working with since I was a freshman. This March we will finally be implementing the sewer, septic tank, and leach field system in the community of Dulce Vivir, Honduras that we've been working on for the past three years. The design is almost complete and we're only about \$6,000 away from meeting our fundraising needs (we've raised about \$30,000 so far). As former president and current secretary of the group, I hope to be one of the people who gets to go on this trip. Not only would seeing the project come to completion be rewarding since I've put so much work into the group, but it would be a great cultural experience, especially because I've studied Spanish since middle school.

On a different note, other major news in my life came this summer when I found out that I was accepted Early Assurance to the Maine Medical Center/Tufts School of Medicine Maine Track program. This guarantees me a seat in the Tufts School of Medicine class of 2016 (after I graduate from Orono). The program is set up so that I will do my first two years at Tufts in Boston, then come back to Maine for my rotations. The whole idea behind the program is to educate physicians who have a desire to practice in the state, which I absolutely do. The Mitchell Institute has made a major impact on me in terms of wanting to stay in Maine; participating in the MILE weekend in 2009 and getting to know the staff, as well as other Mitchell Scholars, have established in me a deep connection to this state that makes me not want to leave.

Dan Gerges
Yarmouth High School
University of Maine Major



I'm currently studying abroad in Dakar, Senegal. My program is through SIT (School of International Training) and is called National Identity and the Arts. I'm about to start a month long independent study at the Maison D'Education Mariama Ba, a girl's middle school and high school on Goree Island. The picture above is of me dancing "mbala" with my host sister in a village named Mouit. To read my blog, go to hannahinsenegal.blogspot.com.

Hannah DeAngelis
Maranacook High School
Colby College

My name is Ryan Larochelle and I am a sophomore at Bowdoin College. I am a French major and Chemistry minor, and I run indoor and outdoor track. Last year, I founded the Slam Poet Society. Our group has been performing a lot on campus. We have 15 members and perform in a range of venues and on a range of topics. We have even been working on group poems lately. I plan to study in France next fall, and I am pre-med.

Ryan Larochelle
Bangor High School
Bowdoin College

I recently made the UNE Men's Basketball Team and have been doing really well in the Sports Management Program, too.

Christopher Ouellette
Schenk High School
University of New England



I run track and last year I broke 2 school records, one in the Distance Medley Relay (previously set in 2000) and one in the 400m (previously set in 1987). I was also awarded Rookie of the Year for the track team at Colby during both the indoor and outdoor seasons. I volunteer during the summer, helping coach a youth track and field team, the Poland Panthers. The team ended up winning the state championship this year, which was a great accomplishment.

This upcoming January, I will be studying abroad in Ecuador and the Galapagos Islands, doing biological research. I am extremely excited about this, not only because I have never left the United States, but because I am a biology major and studying in the Galapagos is an amazing opportunity. Not to mention, I'll be able to snorkel with the exotic fish and turtles!

Brittney Bell
Poland Regional High School
Colby College

I received a scholarship from my the UMaine School of Nursing to attend the 2010 Transcultural Nursing Society Conference in Atlanta, GA. While I learned a tremendous amount from the sessions, the question and answer periods led to discussions that I thought were very thought provoking. Networking was another great part of the weekend. I met nurses from all over the world that are interested in transcultural nursing.

Samantha Paradis
Wisdom High School
University of Maine

Mitchell Institute Authors Higher Education Policy Report

Earlier this year, the Maine Compact for Higher Education and Maine Community Foundation contracted with the Mitchell Institute to research and author a white paper on higher education policy options for Maine. The purpose was to provide a framework for understanding, discussing and acting on issues critical to achieving the Compact's goal of increasing our state's higher education attainment.

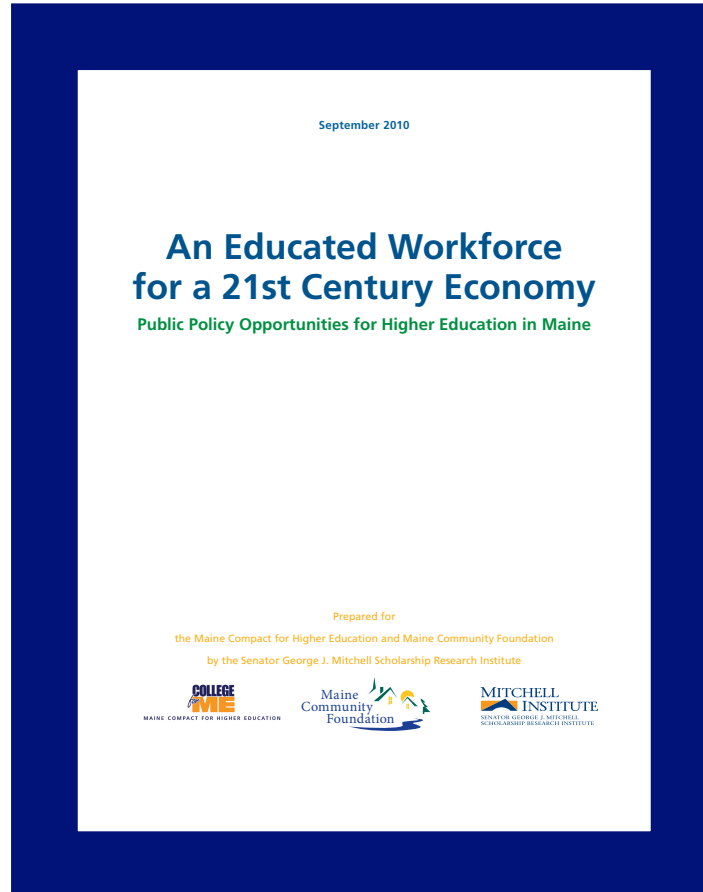
The paper, entitled *An Educated Workforce for a 21st Century Economy: Public Policy Opportunities for Higher Education in Maine*, identifies four key issue areas:

1. Aligning higher education with workforce needs;
2. Financial access to college;
3. State support for higher education institutions; and
4. Multiple higher education pathways.

An appendix describes a selection of promising practices already happening in Maine.

Key data findings from the report include:

- In Maine, jobs requiring postsecondary education or training are projected to grow by 15,000 over the next decade, while jobs for high school graduates and dropouts combined will increase by only 2,200.



- Unemployment—a key measure of workforce demand—has risen by more than 50% during this decade for Maine workers with a high school diploma or less. Unemployment of workers with some college education has remained stable, and unemployment has dropped for workers with a bachelor's degree.
- In the past twenty years, college costs nationally have increased at a rate four times faster than the consumer price index, far outpacing even the growth of medical care costs. On average, the cost of college has increased by 38% in Maine over the past decade alone.
- Unmet financial need for college is on the rise for lower-income families. Total unmet financial need among all Maine undergraduate students five

years ago was estimated at \$117.4 million—or \$1,692 per student—for one year of college.

- Relative to personal income, Maine's fiscal support for higher education has dropped by 40% since 1990. By this measure, state support for higher education in 2010 reached its lowest level since 1967.
- A minority of Maine's high school students demonstrates academic readiness for college. Fewer than half of Maine 11th graders meet or exceed state learning standards each year
- Nearly one-half of first-time students entering the Maine Community College System and one-quarter of those entering the University of Maine System need at least one remedial college course.
- Maine has 250,000 working-age adults with only a high school diploma. In 2005, however, less than 7% of these adults were enrolled in postsecondary education, placing Maine 42nd among the 50 states.

The White Paper framed a gubernatorial candidates' debate held at the Compact's Higher Education Symposium on September 28th, which was later broadcast on the Maine Public Broadcasting Network. The report will be shared with incoming legislators at the Maine Policy Leaders Academy in December.

Continued from Page 1

Bangor Savings Bank; and supported through gifts made in memory of Dr. John W. Painter, a much beloved family physician from Raymond, Maine; and a grant from Alpha Psi Chapter of Delta Kappa Gamma. Awards are also given yearly by the Mitchell Institute Alumni Council through the Alumni Council Award Program (ACAP). This program offers financial assistance to Scholars and Alumni for personal and professional opportunities.

As we head into another year, we have realized that the COSA program and the ACAP program do not adequately meet the needs of Mitchell Scholars and Alumni. Therefore, the Institute will reformulate these two programs and expand them.

One program will focus on career exploration in Maine. Mitchell Scholars and Alumni will be eligible for these awards, which help support them as they take internships in Maine businesses, government, and nonprofits. The funding can be used as a stipend to cover unpaid work, travel expenses, or housing during the internship. A community service commitment is required of all recipients.

The other program will focus on career, personal, and volunteer experiences - wherever they exist. Both Mitchell Scholars and Alumni will be eligible for these awards, which will help support them as they take internships outside of Maine, pursue professional or personal development (including professional licensing, exam fees or conferences), or volunteer for projects that would otherwise be inaccessible because of monetary constraints.

As we refocus our efforts to assist Mitchell Scholars and Alumni, we need your support. Without funding, these programs can not exist. We are seeking

sponsors for these two critical programs that have become far more meaningful in our current economic climate. If you, your business, or your foundation would consider partnering with the Mitchell Scholars and Alumni, you could have a great economic impact on their future! Please call Bonnie Titcomb Lewis at (207) 773-7700 or email her at btitcomb@mitchellinstitute.org.



Mitchell Scholar Cody Humphrey worked for the Casco Bay Estuary Partnership

2010 COSA Award Recipients**Eric Brooks**

University of Maine at Farmington
Intern with Maine Farm Bureau Association

Noah Burke

Bates College
Intern with YouthLinks Summer Camp

Joseph Marro

University of Maine
Summer Intern with Congresswoman Chellie Pingree's District Office

Sarah Beaulieu

University of Southern Maine
Intern with Dominican Republic International Service Learning Program at USM

Teresa Cooper

Bates College
Intern with Maine Department of Conservation

Jennifer Babb

Colby College
Intern with Maine Historic Preservation Commission

Brian Harris

University of Maine
Intern with Surry Music Therapy Center

Amanda Chaney

University of Maine
Research Assistant with Dr. Tanja N. Ebel

William Querry

University of New England
Intern with Gilsland Farm

Nattakul Vivattanakulpanit

University of New England
Volunteer with Maine Medical Center

Paige Piper

Bentley College
Intern with Wright Express

Leah Hughes

Bowdoin College
Marketing Intern with Safe Passage/Camino Seguro at Bowdoin College

Justin Giroux

Bates College
Research Assistant with Bates College Chemistry Department

Logan Ouellette

University of Maine
Project Engineer with Bath Iron Works

Cody Humphrey

University of Maine at Presque Isle
Surveyor of Potential Fish Passage Barriers with Casco Bay Estuary Partnership

Logan Edwards

University of Maine
Finance Intern with Bath Iron Works



Mitchell Institute Leadership Experience

Mitchell Scholars donned fleece vests donated by L.L. Bean at the MILE weekend. Unum has been the lead sponsor of the event, held in Millinocket, for the past several years.



Mitchell Scholars Scott Laflamme (left) and Nate Kinney (right) with David Johnson, President of the Mitchell Institute Board of Directors.

MILE Weekend Brings Together Scholars from Across Maine

Thirty-five Mitchell Scholars gathered together at the New England Outdoor Center in Millinocket over the Columbus Day long weekend for an annual leadership retreat. The Mitchell Institute Leadership Experience - MILE - is a special weekend that each year offers Mitchell Scholars the opportunity to develop leadership and teamwork skills, network with each other, and engage in community service. The weekend also serves to create a new group of leaders among the Mitchell Scholars - students who we know first-hand will be outstanding representatives of our program.

Friday night began with some energetic ice-breaker activities and a great conversation with Jean Hoekwater, a naturalist from Baxter State Park.



Mitchell Scholars stopped for lunch on their way up Kathadin, enjoying the amazing fall scenery.

After a good night of sleep and a hearty breakfast, the group left bright and early Saturday morning to trek in the park under sunny but very windy conditions. They broke into groups for hikes of different levels of difficulty. One group reached the summit of Mount Kathadin!

Upon their return, the exhausted group had dinner and a program: *A Vision For Maine's Future*, led by Colleen Quint, the Institute's executive director. On Sunday, they went to Baxter State Park to clear trails for The Nature Conservancy. The "visioning" conversation proved to be especially engaging, with Scholars spending over 2 1/2 hours discussing Maine's future. Colleen promised to capture their ideas and share them with the new governor and legislature.

The weekend is supported each year by a generous grant from **Unum**.



VICTORY! Mitchell Scholars summit Kathadin, finding snow and the best view in Maine!

Mitchell Scholar Jon Cunningham captured the sentiments of many of the weekend's participants when he said, "We had a great weekend and thoroughly enjoyed ourselves at the **New England Outdoor Center** (NEOC). Owners Matt and Wendy Polstein have hosted the MILE weekend for a number of years now. They and their team always treat the Mitchell Institute well and make us feel right at home in their beautiful setting on Millinocket Lake."

From the Mitchell Institute perspective, said Colleen Quint, "This weekend is always a highlight of the year for me. Spending this kind of time with such an outstanding group of young people always leaves me energized. It's a lot of fun, to be sure. But it's the relationships we build that really have lasting impact."



Left to Right: Senator George Mitchell and his wife, Heather, with Linda and Tom Walsh. Tom Walsh, a member of the Board of Directors of the Mitchell Institute and the owner of the Marriott Hotel in South Portland, donates the Fall Gala to the Mitchell Institute each year, ensuring that all proceeds directly benefit the Mitchell Institute and its Scholars.



Senator George Mitchell (center) presents the Millennium Award to Nancy and Chris Pierce.



John Oliver, Vice President of Public Affairs for L.L. Bean, accepts the Millennium Award from Senator Mitchell on behalf of the company.



Paul Mitchell (left) and Bill Mitchell (right) accept the Millennium Award from Senator Mitchell on behalf of their company, GHM Insurance Agency.

Continued from page 1

In the awards portion of the program, Mary Mitchell Friedman, the Past President of the Mitchell Institute’s Board of Directors and the evening’s master of ceremonies, graciously thanked donors who have provided extraordinary gifts to the Mitchell Institute.

Two categories of awards were given at this year’s gala: Millennium and Pioneer Awards. Millennium Awards are typically bestowed upon individuals or organizations whose gifts bring their cumulative total to \$50,000 or more. Three Millennium Donors were honored at this year’s Gala: **Chris & Nancy Pierce, GHM Insurance Agency, and L.L. Bean.** The Mitchell Institute is deeply

grateful for the dedication of these donors.

The Pioneer Awards Program offers our singular scholarship naming opportunity for donors who support the Mitchell Institute at the \$125,000 level. This unique partnership between the donor and the Mitchell Institute provides the opportunity to honor individuals, groups, or businesses for their achievements through the naming of annual scholarships that will be given in perpetuity in the name of the Pioneer donor or the Pioneer’s designee. The Pioneer Scholarship Program also enables the Mitchell Institute to honor certain Mitchell Scholars, who, through their contributions to school and community – and their demonstration of certain exemplary qualities as students and

citizens – stand out for acknowledgment. (A full listing of all Pioneer Scholar Award winners can be found on Page 8).

This year, the Mitchell Institute was honored to bestow Pioneer Awards upon three donors: **TD Bank, the Lee Family, and the Harold Alford Foundation.** Each of these Pioneer Donors creates a new Pioneer Scholar Award. TD Bank’s award will honor William Ryan, the bank’s former president. The Lee Family’s award will memorialize Shep Lee, a former board member of the Mitchell Institute who passed away this summer. The Alford Foundation’s awards memorialize Harold Alford by naming the Mitchell Scholarships at Dexter and Messalonskee High Schools in his honor.



Larry Wold of TD Bank accepts the Pioneer Award from Senator Mitchell. This award recognizes former TD Bank Chairman Bill Ryan by naming a Pioneer Scholarship in his honor.



Larry Pugh (left) and Greg Powell (right), accept two Pioneer Awards on behalf of the Harold Alfond Foundation. These awards name the Pioneer Scholarships at Dexter and Messalonskee High Schools in memory of Harold Alfond.



Candice Lee accepts the Pioneer Award from Senator Mitchell on behalf of the Lee Family. This award memorializes Shep Lee, a former Director of the Mitchell Institute. The award names the Pioneer Scholarship at Lewiston High School.

Mitchell Institute Fall Gala

In his keynote address, Senator Mitchell reflected on the people and events that shaped his decision to create the Mitchell Scholarships and then the Mitchell Institute. He discussed the global challenges we are facing as a society, underscoring that a highly educated citizenry and skilled workforce are absolutely vital. Senator Mitchell pointed to the extraordinary opportunities for leadership development and community service among Mitchell Scholars as resources that will prepare them to be “fully engaged and contributing members of society.”

The Mitchell Institute thanks the many corporations, foundations and individuals who supported this year’s Fall Gala.

The corporate Prime Sponsor of the Gala was **Wright Express**. **TD Bank** was the Leadership Sponsor, and **Time Warner Cable of Maine** served as the Major Sponsor. Co-sponsors were **Alere**, **GHM Insurance Agency**, **IDEXX**, **Lee Auto Malls**, **MEMIC**, **Swardlick Marketing Group**, and **Unum**.

Additional sponsors included **Bangor Daily News**, **Bangor Savings Bank**, **Roger & Chagit Deitz**, **KeyBank**, **Preti Flaherty**, and **Northern New England Passenger Rail Authority**. Special thanks also to **Pan Atlantic SMS Group** for their support of the 2010 Fall Gala.

We also thank our table sponsors and host committee members, as well as everyone who attended this very special event.

Senator Mitchell chats with Chagit and Roger Deitz. The Deitzs graciously sponsored Mitchell Scholars attending the Fall Gala.



Mitchell Scholar Alumna Dakotah Weitko Atchinson (far right) was one of the evening’s speakers. Pictured also are her parents, Vicki and John Weitko, with Senator Mitchell.



Senator Mitchell and Heather Mitchell with two of the Mitchell Institute’s most ardent supporters, Lisa and Leon Gorman.



Gala Photo Credit: Pictures by Tim Byrne of Tim Byrne Photography in Scarborough, Maine.

2010 Pioneer Scholar Awards

Each year at the Fall Gala, the Mitchell Institute honors certain among our Mitchell Scholars who, through their contributions to school and community, and their demonstration of certain exemplary qualities as students and citizens, stand out for recognition as Pioneer Scholars. The selection criteria for this recognition are determined by a Pioneer donor who has generously helped support the Mitchell Scholarship Program with a gift of at least \$125,000.



Mitchell Scholar Ameena Khan of Waterville with Senator Mitchell.



Mitchell Scholar Patrick Gallagher of Bethel with Senator Mitchell.



Mitchell Scholar Kimberly Dao of Saco with Senator Mitchell.

Paddy Frank Walsh Pioneer Scholar Award

Sam Portera
Limestone Community School
University of Maine at Fort Kent

Recognizes a Mitchell Scholar who has overcome tremendous obstacles to achieve success.

Leon and Lisa Gorman Pioneer Scholar Award

in honor of Senator George J. Mitchell
Nate Kinney
Mount Abram High School
University of Maine

Recognizes a Mitchell Scholar who has demonstrated strong qualities of leadership, character, and hard work.

Senator George J. Mitchell Pioneer Scholar Award

Alex Cornell du Houx
Carrabec High School
Bowdoin College

Recognizes a Mitchell Scholar Alumni for leadership, character, and perseverance

Bath Iron Works – Buzz Fitzgerald Pioneer Scholar Award

Mallory Plummer
Morse High School
University of Vermont

Recognizes a Mitchell Scholar who is a child or grandchild of a BIW employee, and who embodies the characteristics of leadership and compassion for which Buzz Fitzgerald was known.

Casella Pioneer Scholar Award

Teresa Cooper
Nokomis High School
Bates College

Recognizes a Mitchell Scholar entering the field of environmental studies.

George & Mintaha Mitchell Pioneer Scholar Award

in memory of George and Mintaha Mitchell
Ameena Khan
Waterville High School
Bowdoin College

Recognizes the Mitchell Scholar from Waterville High School.

Morton K. and Jane Blaustein Pioneer Scholar Award

Kim Lim
South Portland High School
University of Southern Maine

Recognizes first-generation college-goers and students from recently immigrated families

Sam L. Cohen Foundation Pioneer Scholar Award

Jaclyn McCurry
Biddeford High School
University of Maine

Recognizes the Mitchell Scholar from Biddeford High School

Mitchell Senate Staff Pioneer Scholar Award

in memory of Gayle Cory
Kaylie Thornton
Carrabec High School
Thomas College

Recognizes a Mitchell Scholar whose belief in public service, faith in people and dedication to the greater good are a model to all.

Ott Family Pioneer Scholar Award

Terri Bastarache
Gorham High School
University of Maine

Recognizes the Mitchell Scholar from Gorham High School, who has demonstrated academic promise and a history of community service.

John & Nellie Jackson Pioneer Scholar Award

Patrick Gallagher
Telstar High School
Maine Maritime Academy

Recognizes a Mitchell Scholar attending Maine Maritime Academy who represents personal humility and hard work.

Janet Fraser Mitchell Pioneer Scholar Award

Hannah Belanger
Upper Kennebec Valley High School
Colby College

Recognizes a Mitchell Scholar at Colby College, with a preference towards those majoring in English Literature.

Walt Disney Company Pioneer Scholar Award

Cassandra Engstrom
Ellsworth High School
University of Southern Maine

Recognizes a Mitchell Scholar who has demonstrated an interest and talent in the arts.

Jack & Charlie Canning Pioneer Scholar Award

Andy Estrada
Hall-Dale High School
Colby College

Recognizes a Mitchell Scholar from the greater Augusta area who has demonstrated academic growth, leadership, and enthusiasm for the community.

Sam L. Cohen Foundation Pioneer Scholar Award

Kimberly Dao
Thornton Academy
University of Maine

Recognizes the Mitchell Scholar from Thornton Academy



Mitchell Scholar Alumni News

ARTIST: My husband and I bought an old house on Little Cranberry Island with the assistance of the Cranberry Isles Realty Trust. CIRT is an organization that aims to create and maintain affordable year-round housing on the Cranberry Isles. With the help of family and friends, we spent the winter renovating the house which hadn't been lived in for over 20 years. Although year-round island living takes some getting used to (like having to take an entire day just to get groceries), we are excited to be living in a community which has embraced us since we first moved here several years ago. I continue to work as a full time studio potter. Besides my usual holiday sales and orders that I've been preparing, this fall I've been invited to show eight mugs in an exhibition at the Society of Arts and Crafts in Boston. The show, "Our Cups Runneth Over" will take place from November 16, 2010 until January 22, 2011. You can check out more of my work at www.kaitlynduggan.com! - Kaitlyn Duggan, Morse High School, Maine College of Art

Psychologist



Recently, I started as a Clinical Psychology student at Midwestern University, a health professions school in Glendale, Arizona. It's a 4-year accelerated Doctorate level program. I will graduate from the program with a Doctor of Psychology, PsyD. It follows the practitioner-scholar model of preparation, which recognizes the need for expertly trained practitioners. Therefore, we engage in 3 different practicum experiences that each last different time lengths. I'm looking forward to my fourth year internship and will hopefully find an APA accredited site back in Maine!

Cassandra North
Old Orchard Beach H.S.
University of New England

Entrepreneur



My computer business, Charybdis Computer Services in Franklin, Maine, continues to grow, sustaining about 24% increases for the last two years. It's still small, but it's progress. I'm also continuing on my remodeling project of my storefront property where I will be opening the Franklin Tech Lab (or something like that), a combination internet cafe and office service/copy center. It's in a historic building which has been in my family since it was built circa 1865. (Pictured above with his uncle, who is helping him remodel the storefront).

Roy Gott
Sumner Memorial H.S.
University of Maine

Banking



I completed my MBA in May of 2010 and was married on August 19th in Napa Valley, California to Jon Martin. I am still very excited to be working at TD Bank in Portland, and I am active in the Mitchell Institute Alumni Council.

Michele (Savage) Martin
Scarborough High School
University of Maine
University of Southern Maine

Non-Profit



This fall I was hired on full time as Project Coordinator for the Center for Community GIS (CCGIS) after serving at the organization for two years as an AmeriCorps Member. Based out of Farmington, Maine, CCGIS is a nonprofit providing a suite of mapping services and support to public interest groups all over the state and region, including the Maine DOC, multiple land trusts and municipalities, and other types of trail groups. One of my primary and most exciting projects is coordinating efforts on Maine Trail Finder, a free searchable online portal for finding non-motorized trails in the state.

Joel Alex
John Baptist Memorial H.S.
Colby College

Accounting



I recently graduated in May from the University of Maine with a BS in Accounting. I started grad school at UMaine for my MBA during the past summer. The UMaine MBA program is great, and as part of my studies I will be traveling to Japan and South Korea next spring! I am also working as a Graduate Assistant at the Office of Student Financial Aid. At my job, I get to advise students on financial aid, supervise student employees, and award scholarships and other aid.

Jessie Daniels
Shead High School
University of Maine

2010 Mitchell Scholars

The Board of Directors of the Mitchell Institute is pleased to announce the recipients of the 2010 Mitchell Scholarships.

Androscoggin

Cameron Blouin, Lisbon High School
 Willie Brown, Livermore Falls High School
 Michelle Caron, Lewiston High School
 Benjamin Denison, Edward Little High School *
 Brittany Nye, Poland Regional High School
 Erin Plante, Oak Hill High School
 Samantha Varney, Leavitt Area High School

Aroostook County

Taylor Baker, Ashland Community High School
 Sydney Beckwith, Washburn District High School
 Jordan Codrey, Houlton High School
 Logan Desmond, Southern Aroostook Community School
 Megan Duprey, Van Buren District Secondary School *
 Kayla Guerrette, Wisdom High School
 Jordan Harris, Presque Isle High School
 Emmaly Jurson, Hodgdon High School
 Elisha Lizotte, Madawaska High School
 Kellie Moody, Caribou High School
 Salvatore Portera Jr., Limestone Community High School
 Anna Sherwood, Easton High School
 Amelia Stevens, Fort Kent Community High School
 Ethan Stiles, Central Aroostook High School
 Kiri Strack-Grose, Maine School of Science and Math
 Kelsie Wilson, Fort Fairfield High School

Cumberland County

Terri Bastarache, Gorham High School
 Joice Bongomin, Portland High School #
 Patricia Borderia, Yarmouth High School
 Chelsea Bruno, Brunswick High School

Garrett Clemmer, Windham High School
 Nathan Davis, Casco Bay High School #
 Sophie Holbrook, Falmouth High School
 Katherine Hotham, Gray-New Gloucester High School
 Kim Lim, South Portland High School *
 Jeffrey Morse, Westbrook High School
 Gabrielle Mozie, Scarborough High School
 Samuel Naseef, Cape Elizabeth High School
 Keleigh O'Neil, Deering High School
 Caitlyn Paul, Lake Region High School
 Joshua Sturtevant, Freeport High School
 John Visentin, Greely High School

Franklin County

Mallory Bonnevie, Jay High School *
 Emily Christensen, Rangeley High School
 Amanda Hall, Mount Blue High School
 Serena Richard, Mount Abram High School

Hancock County

Cody Farrell, Bucksport High School
 Goldie Garcia, Deer Isle-Stonington High School
 Gabrielle Huebner, Ellsworth High School
 Joshua Sawyer, George Stevens Academy
 Brooke Swanson, Mount Desert Island High School #
 Kelsey Tucker, Sumner Memorial High School *

Kennebec County

Amanda Bouchard, Monmouth Academy
 Kimberly Curtis, Winslow High School
 Andrew Emery, Winthrop High School
 Ameena Khan, Waterville High School
 Cale Knox, Messalonskee High School

Jacob Lachance, Cony High School
 Christopher McArthur, Hall-Dale High School
 Erik Ogren, Maranacook Community High School
 Kory Peckham, Gardiner Area High School *
 Samuel Seekins, Erskine Academy

Knox County

Ann-Marie Beverage, North Haven Community School *
 Christopher Crippen, Camden Hills High School
 Jennifer Guptill, Vinalhaven High School
 Vinh Nguyen, Rockland District High School #
 Alec Young, Georges Valley High School

Lincoln County

Jonathan Dailey, Medomak Valley High School
 Brendan Mammina, Lincoln Academy
 Aleksandra Smith, Boothbay Region High School
 Johanna Verney, Wiscasset High School *

Oxford County

Tyler Aldrich, Telstar High School
 Jediah Allen, Buckfield High School
 Kirstin Blood, Dirigo High School
 Michael Hagenow, Fryeburg Academy
 Daniel Kiley, Mountain Valley High School *
 Mariah Kimball, Oxford Hills High School
 Meagan Ouellette, Sacopee Valley High School

Penobscot County

Caitlin Barrows, Hermon High School
 Mary DeLorenzo, John Baptist High School
 Katie Eastman, Dexter Regional High School
 Jordan Faloon, Penobscot Valley High School *
 Christina Fortin, Hampden Academy

Grace Gonnella, Old Town High School
 Ben Guido, Lee Academy
 Jordan Osnoe, Katahdin High School
 Devvan Powers, Schenck High School
 Jessica Rogers, Stearns High School
 Sean Sibley, Mattanawcook Academy
 Kaylie Smith, Orono High School
 Benjamin Taylor, Nokomis High School
 Justina Ventucci, Bangor High School
 Eric White, Brewer High School
 Brett White, Central High School

Piscataquis County

Ethan Herrell, Penquis Valley High School
 Angel Peterson, Foxcroft Academy
 Matthew Pinkham, Piscataquis Community High School
 Saige Weeks, Greenville High School *

Sagadahoc County

Rebekah Bryer, Mt. Ararat High School *
 Mallory Plummer, Morse High School
 Zachary Towne, Richmond High School

Somerset County

Hannah Belanger, Upper Kennebec Valley High School
 Janet Dosseva, Skowhegan High School
 Tessa Hathaway, Maine Central Institute
 Miranda Liberty, Lawrence High School
 Scott Rivas, Forest Hills Consolidated School
 Nicholas Tart, Madison Memorial High School
 Kaylie Thornton, Carrabec High School *

Waldo County

Kali Berenyi, Searsport High School

Dylan Hahn, Belfast Area High School
 Nicholas Knight, Mount View High School *
 Roxanne Pendleton, Islesboro Central School

Washington County

Jesse Blackburn, Narraguagus High School
 Kit Cates, Shead High School
 Chase Fitzsimmons, Lubec Consolidated School
 Aaron Henn, East Grand School
 Brett Lyons, Washington Academy *
 Whitney Norton, Jonesport-Beals High School
 Hillary Provencher, Calais High School
 Brittaney Shults, Machias Memorial High School
 Felicia Vincent, Woodland High School

York County

Amy Cole, Marshwood High School
 Ashley Cram, Bonny Eagle High School
 Kimberly Dao, Thornton Academy #
 Kelsea Dixon, Old Orchard Beach High School
 Kelsey Heroux, York High School
 Amarinda Keys, Noble High School
 Nicholas Legere, Sanford High School
 Cassandra Leighton, Massabesic High School *
 Jaclyn McCurry, Biddeford High School
 Molly Nunan, Kennebunk High School
 Samantha Paquette, Wells High School
 Amber Robinson, Traip Academy

* Denotes KeyBank Mitchell Scholars

Denotes Unum - Stephen B. Center Diversity Leadership Awards

Mitchell Institute Board of Directors

Senator George J. Mitchell
Honorary Chairman
New York, New York

David Johnson,
Board President
Portland, Maine

Joseph Foley
Vice President
Portland, Maine

Tim Agnew
Treasurer
Portland, Maine

Mary Mitchell Friedman
Past President
Cape Elizabeth, Maine

Margie Bride
Watertown, Massachusetts

Sara Burns
Augusta, Maine

Charles de Siewes
Falmouth, Maine

Charles Dibner
Scarborough, Maine

Peter Dunfee
Cape Elizabeth, Maine

Barbara Keefe
Portland, Maine

Estelle Lavoie
Portland, Maine

Jeffrey Leathe
Eliot, Maine

Richard Lucas
Portland, Maine

Mary McAleney
South Portland, Maine

Joyce McPhetres
Belfast, Maine

Marge Medd
Norway, Maine

Bill Mitchell
Waterville, Maine

Carol Mitchell
Portland, Maine

Heather Mitchell
New York, New York

Merle Nelson
Falmouth, Maine

Harold Pachios
Cape Elizabeth, Maine

Tom Walsh
Bar Harbor, Maine

Mitchell Institute Staff

Colleen Quint
Executive Director
cquint@mitchellinstitute.org

Lisa Plimpton
Director of Research
lplimpton@mitchellinstitute.org

Bonnie Titcomb Lewis
Director of Advancement
btitcomb@mitchellinstitute.org

Lisa Veleff Day
Assistant Director of Advancement
lveleff@mitchellinstitute.org

Lisa Sirois
Senior Accountant
lsirois@mitchellinstitute.org

Catherine MacKinnon
Administrative Assistant
cmackinnon@mitchellinstitute.org

Ryan Mack
Mitchell Scholar Intern
mitchellscholar1@mitchellinstitute.org

HOW YOU CAN HELP!

Please consider the good a gift to the Mitchell Institute can do for the young people of Maine.

YES, I would like to make a gift to the Mitchell Institute!

Name

Address

City, State ZIP

Telephone

E-mail

Please mail this card back with your check payable to the Mitchell Institute or make a donation online at www.mitchellinstitute.org.



The Mitchell Institute
22 Monument Square, Suite 200
Portland, Maine 04101
(207)773-7700
info@mitchellinstitute.org
www.mitchellinstitute.org

The Mitchell Institute has tax-exempt status under Section 501 (c) (3) of the Internal Revenue Code. All donations are deductible for federal and state income tax purposes to the full extent provided by law.

Mitchell Scholars Help Beautify Bangor!

On Saturday, October 30th, the Mitchell Institute - working closely with numerous Bangor businesses and the Bangor Daily News - brought nearly 50 Mitchell Scholars and Alumni together for a morning of community service. The "Bangor Beautification Day" effort sent students out to three locations around the city: Hayford Park, Broadway Park and the Waterfront area. Assisted by the city Parks & Recreation crew, Mitchell Scholars and Alumni restored and upgraded local walking trails and cleaned debris. Several local residents expressed their appreciation for the effort and the local Parks & Rec crew chief said "This is a group we really want to come back - the Scholars did a great job for us this morning!" Leading up to the day, the Bangor Daily News donated a series of a half dozen half-page ads to promote the day, and to raise awareness about the Mitchell Institute in the community.



Mitchell Institute Executive Director Colleen Quint with Johann Sabbath of the Bangor Region Chamber of Commerce and Elizabeth and Peter Hansen of the Bangor Daily News.



Mitchell Scholars worked hard to clean up three public areas in Bangor.



Mitchell Scholars Lauren Duplin, Nate Kinney and Scott Laflamme with Colleen Quint after a morning of Beautifying Bangor!